



# CONTINUING BRITISH COLUMBIA'S GOLDEN LEGACY

Drill Hole 14-707 grading 14,394 g/t Gold & 6830 g/t Silver<sup>(1)</sup>

<sup>(1)</sup>Over 0.75m at Premier

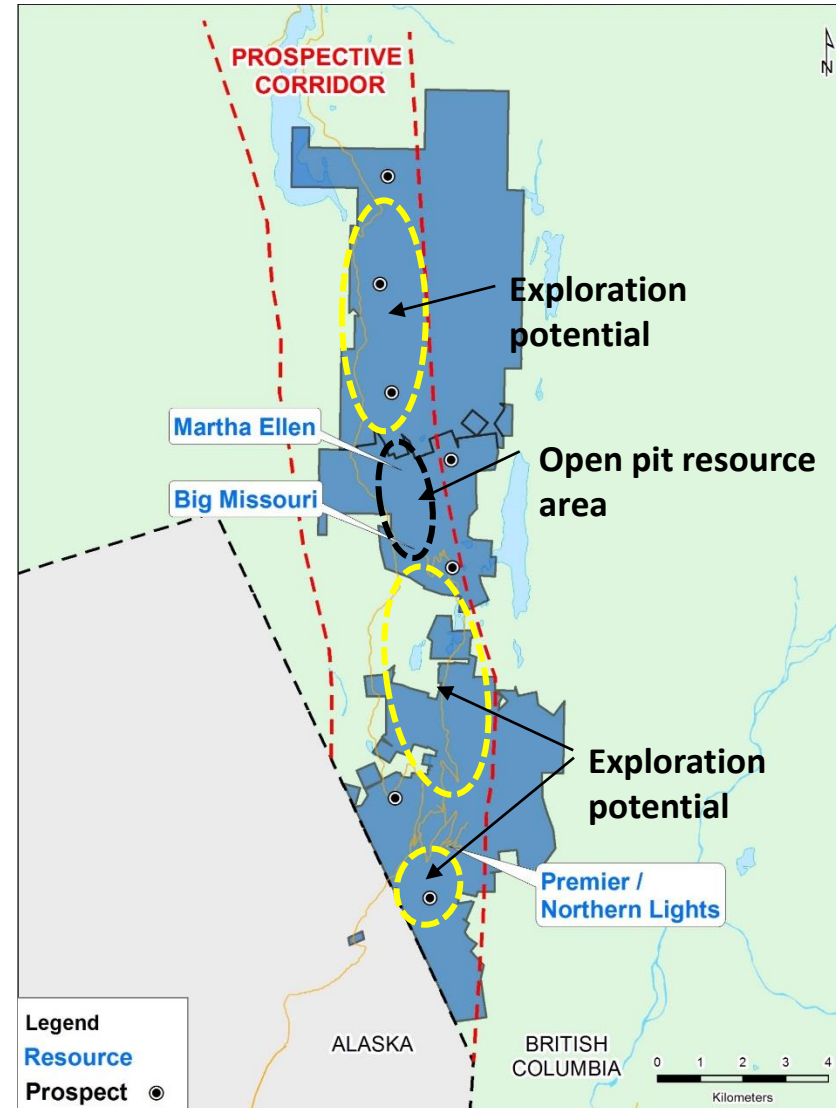
# CAUTIONARY STATEMENT



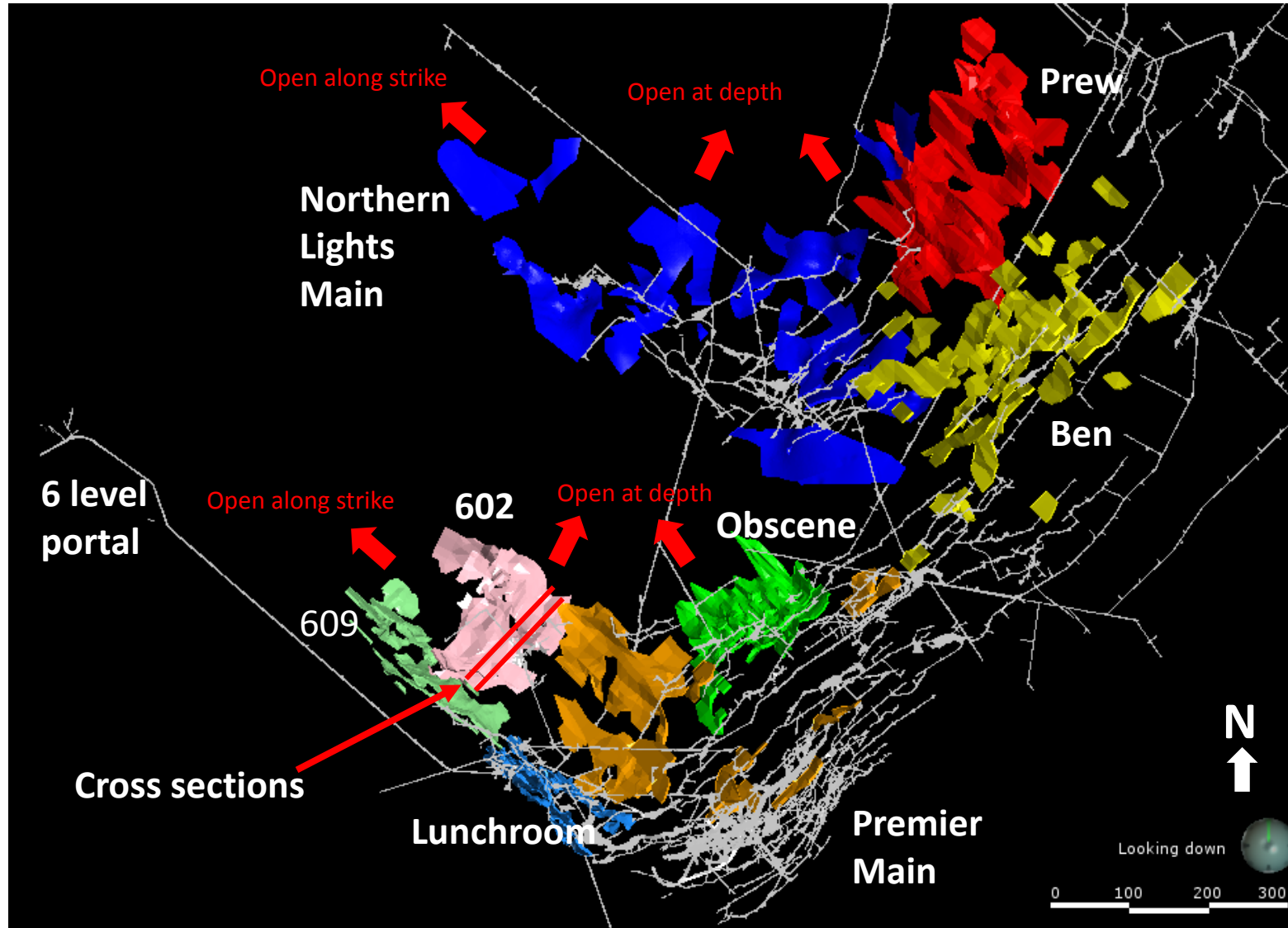
This presentation contains certain forward-looking information concerning the business of Ascot Resources Ltd. (the "Corporation"). All statements, other than statements of historical fact, included herein including, without limitation; statements about the exploration of the Premier Property and completion of the acquisition of the Premier Property, are forward-looking statements. These forward-looking statements are based on the opinions of management at the date the statements are made and are based on assumptions and subject to a variety of risks and uncertainties and other factors that could cause actual events to differ materially from those projected in forward-looking statements. Important factors that could cause actual results to differ materially from the Corporation's expectations include fluctuations in commodity prices and currency exchange rates; uncertainties relating to interpretation of drill results and the geology, continuity and grade of mineral deposits; the need for cooperation of government agencies and native groups in the exploration and development of properties and the issuance of required permits; the need to obtain additional financing to explore and develop properties and uncertainty as to the availability and terms of future financing; the possibility of delay in exploration programs and uncertainty of meeting anticipated program milestones; uncertainty as to timely availability of permits and other governmental approvals. The Corporation is under no obligation to update forward-looking statements if circumstances or management's opinions should change, except as required by applicable securities laws. The reader is cautioned not to place undue reliance on forward-looking statements.

# ASCOT'S STRATEGIC GOAL OF ADDING RESOURCES

- Brand new underground resource provides mill feed for approximately 6 years at the envisioned minimum throughput rate of 1000 tpd
- Explore extensions at Premier/Northern Lights for additional mill feed close to the mill
- Define underground resources at Big Missouri within existing 2014 open pit resource
- Structural framework which indicates high potential for additional resources in the 5 km gap between Premier and Big Missouri
- Geologic showings indicating exploration potential in the far north and south of the property



# PLAN VIEW OF THE GRADE SHELLS AT PREMIER/NORTHERN LIGHTS



## 8 modeled zones

### Premier

1. 602
2. 609
3. Obscene
4. Lunchroom
5. Premier Main

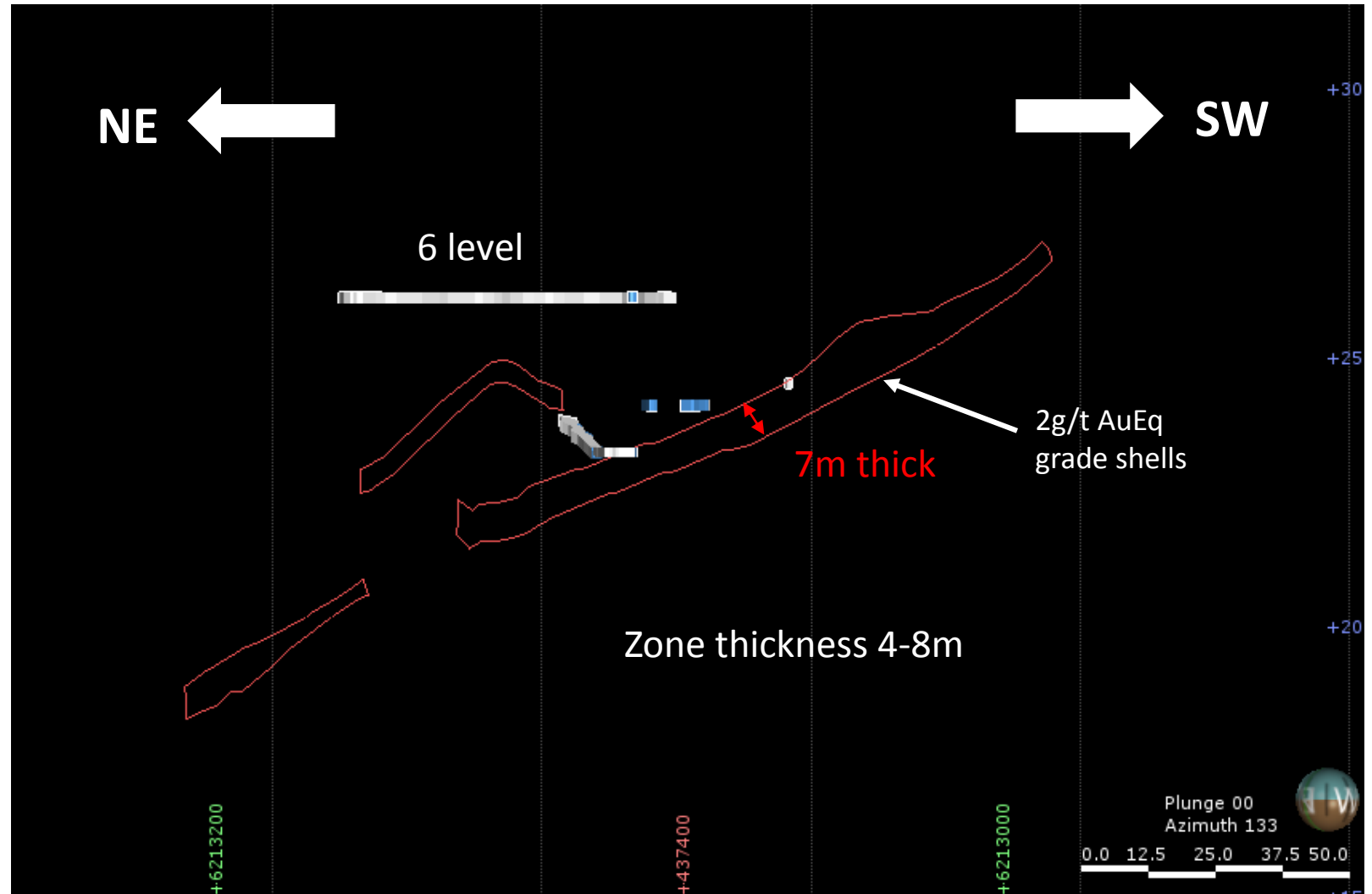
### Northern Lights

1. Prew
2. Ben
3. NL Main

# MODERATE DIP, GREATER THICKNESS AND HIGH GRADE AT 602 AND PREW

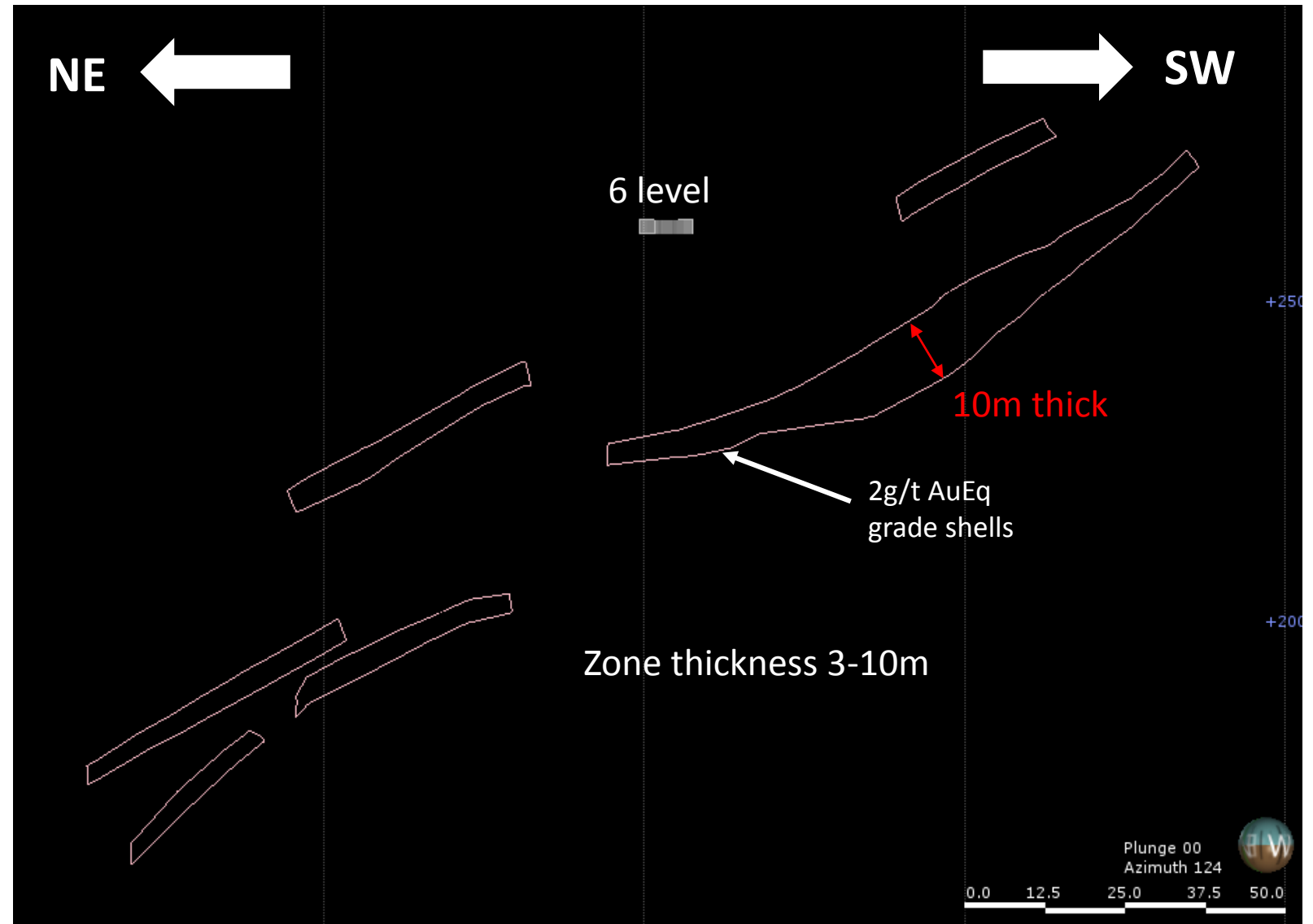
Illustrative Cross-Section perpendicular to strike of 602

- The 602 and Prew zones display a more moderate dip than the historical stopes
- Both zones are easily accessible from the 6 level and could be accessed early in the life of mine
- Both zones are relatively thick and have the highest grades of all zones included in the new resource



# ILLUSTRATIVE CROSS-SECTION PERPENDICULAR TO STRIKE OF 602

- Cross section 20m along strike from previous cross section
- 602 zone is in excess of 100m wide



# SUMMARY



- Maiden underground resource completed
- Drilling underway for second resource
- Additional resource targets between Premier and Big Missouri planned
- Engineering studies underway
- Management continues to focus on adding additional resources while working on numerous other near-term requirements necessary to re-start the Premier mine