



CONTINUING BRITISH COLUMBIA'S GOLDEN LEGACY

让卑诗省的黄金资产再次发光

Drill Hole 14-707 grading 14,394 g/t Gold & 6830 g/t Silver⁽¹⁾

钻孔14-707见黄金品位14,394克/吨、白银6830克/吨的矿段⁽¹⁾

⁽¹⁾Over 0.75m at Premier

⁽¹⁾位于Premier，超过0.75米

CAUTIONARY STATEMENT / 警戒性声明



This presentation contains certain forward-looking information concerning the business of Ascot Resources Ltd. (the "Corporation"). All statements, other than statements of historical fact, included herein including, without limitation; statements about the exploration of the Premier Property and completion of the acquisition of the Premier Property, are forward-looking statements. These forward-looking statements are based on the opinions of management at the date the statements are made and are based on assumptions and subject to a variety of risks and uncertainties and other factors that could cause actual events to differ materially from those projected in forward-looking statements. Important factors that could cause actual results to differ materially from the Corporation's expectations include fluctuations in commodity prices and currency exchange rates; uncertainties relating to interpretation of drill results and the geology, continuity and grade of mineral deposits; the need for cooperation of government agencies and native groups in the exploration and development of properties and the issuance of required permits; the need to obtain additional financing to explore and develop properties and uncertainty as to the availability and terms of future financing; the possibility of delay in exploration programs and uncertainty of meeting anticipated program milestones; uncertainty as to timely availability of permits and other governmental approvals. The Corporation is under no obligation to update forward-looking statements if circumstances or management's opinions should change, except as required by applicable securities laws. The reader is cautioned not to place undue reliance on forward-looking statements.

ABOUT ASCOT / 关于ASCOT

- Ascot is a gold mining development company. Its project, the Premier-Dilworth property, is located in southern portion of the Golden Triangle (the Alaska-British Columbia border) / Ascot是一家金矿开发公司，其Premier-Dilworth 项目区位于金三角区（阿拉斯加—卑诗省边境）
- The Golden Triangle is an area with a significant gold mining history from the days of the gold rush and is endowed with very high-grade gold deposits / 黄金三角区自淘金热以来一直是黄金开采史上的重要区域，拥有非常高品位的黄金矿床。
- A brand new management team joined the company in November 2017, bringing significant experience of building and operating mines along with creating shareholder value / 2017年11月全新的管理团队加入公司，带来了大量建设和运营矿山并为股东创造价值的经验，
- The Ascot gold property has an historically well invested infrastructure which facilitates significant capital cost advantages over greenfield opportunities / Ascot的黄金项目区拥有历史上大量投资的基础设施，与绿地相比具有更大的资本成本优势

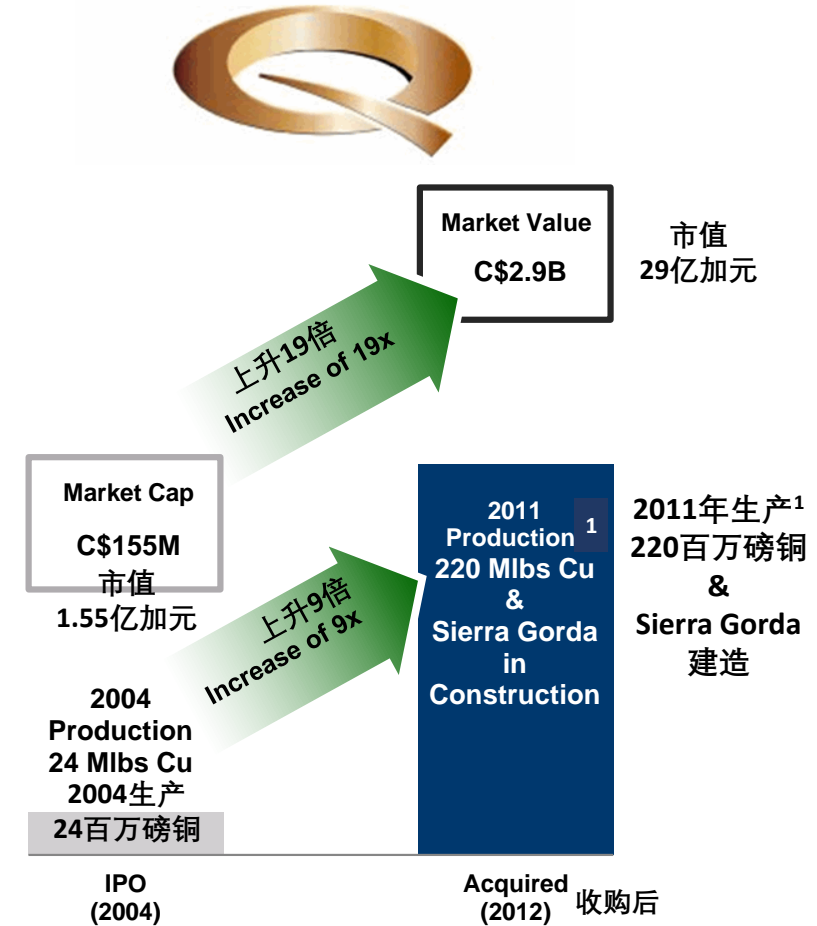


TRACK RECORD OF VALUE FOR SHAREHOLDERS

为股东创造价值的成功履历



- Management team has proven record of creating shareholder value by building and operating mines:
- 管理团队具有通过建设和经营矿山为股东创造价值的成功履历
 - ✓ IPO of Quadra Mining in 2004 of ~CAD\$145Million on one mine in Nevada
2004年Quadra Mining凭借内华达州的一处矿山首次公开发行，融资约1.45亿加元
 - ✓ Initial Quadra share price at CAD\$6 a share, reached as high as \$26 per share in 2008
Quadra上市之初股价为6加元/股，2008年最高上探至\$26/股
 - ✓ Successfully went from junior to mid-tier producer with 7 mines and multi-billion dollar projects culminating in ~CAD\$3 billion acquisition in 2012 by KGHM
成功由一家初级公司发展成为一家拥有七座矿山的中级生产商，最终2012年被KGHM以约30亿加元收购



Source: company disclosure, Bloomberg, Factset / 来源: 公司披露信息、彭博社、Factset

1. Acquired by KGHM in 2012, final full year of production occurred in 2011 / 2012年被KGHM收购，最后的完整生产年份为2011年

2018 ACTIVITIES / 2018年的活动

Corporate Focus: / 公司专注于:

- To establish 2 Million ounces of high-grade resources to re-start the mill at up to 3,000 tonnes per day / 确定 200万盎司的高品位资源量，重启每天处理矿石3,000吨的加工厂

Key Successes in the Summer of 2018: / 2018年夏季的重要成果:

- ✓ Completed ~42,000m of drilling: / 完成了约42,000米的钻探
 - to progress new high-grade resources at the Big Missouri Ridge / 推进在Big Missouri山岭新发现的高品位资源区
 - to expand resources at Premier Northern Lights / 扩大Premier内北极光区的资源量
- ✓ Announced synergistic acquisition of “next door” Silver Coin project / 宣布协同收购“相邻的”Silver Coin项目
- ✓ Tested IP Geophysics with successful proof of concept and undertaking a survey over highly prospective target area of 12 km / IP地球物理测试，成功地验证了概念，对12公里的前景非常好的靶区进行了勘测
- ✓ Progressing engineering studies to restart operations with 7 engineering firms / 推进工程研究，重新启动与7个工程公司的业务
- ✓ Advancing the preparation for amendments to existing permits / 推进现有许可证更新的准备工作
- ✓ Announced a new financing to progress additional drilling given success this summer season and Geophysics / 鉴于今年夏季以及地球物理勘测上取得的成功，宣布一项推进更多钻探的新融资计划



ASCOT'S ADVANTAGES / ASCOT的优势

- ✓ Key infrastructure already in place; 20km from Stewart on public road, mill and tailings facility, water treatment plant, power plant and developed underground mine infrastructure / 重要基础设施已经到位；与斯图尔特的公路距离为20公里，工厂和尾矿设施，发电厂以及已开发的地下矿基础设施
- ✓ High-grade advanced gold project; so far ~ 1 in 10 holes hit 1 oz. gold per tonne or better grades with near term resources and multiple targets / 高品位高级阶段黄金项目，迄今为止十口钻孔中有一口钻探到黄金品位1盎司/吨或以上的矿段，具有多个靶区，近期发布资源量信息
- ✓ Exploration upside with 70% of the property not explored yet with positive initial results from IP Geophysics / 勘探上升潜力，70%的项目区尚未勘探，IP地球物理勘测初步结果乐观
- ✓ Management with proven track record of value creation for shareholders; taking projects from exploration through to production / 管理团队具有为股东创造价值的成功履历；推动项目由勘探阶段进入到生产阶段
- ✓ Underrealized value of non-gold assets / 未充分实现的非黄金资产价值
- ✓ Favourable jurisdiction and favorable environmental considerations / 对矿业友好的辖区

Premier Mine Portal 6 Level
矿山6级入口



Premier Mill/ Premier工厂



EXISTING INFRASTRUCTURE / 现有基础设施



Water Treatment Plant
水处理厂



Long Lake Hydro Dam
Long Lake水电站



Regional's 31 MW Power Plant
31兆瓦的发电厂



Exploration Drills
钻探



Port of Stewart
斯图尔特港口



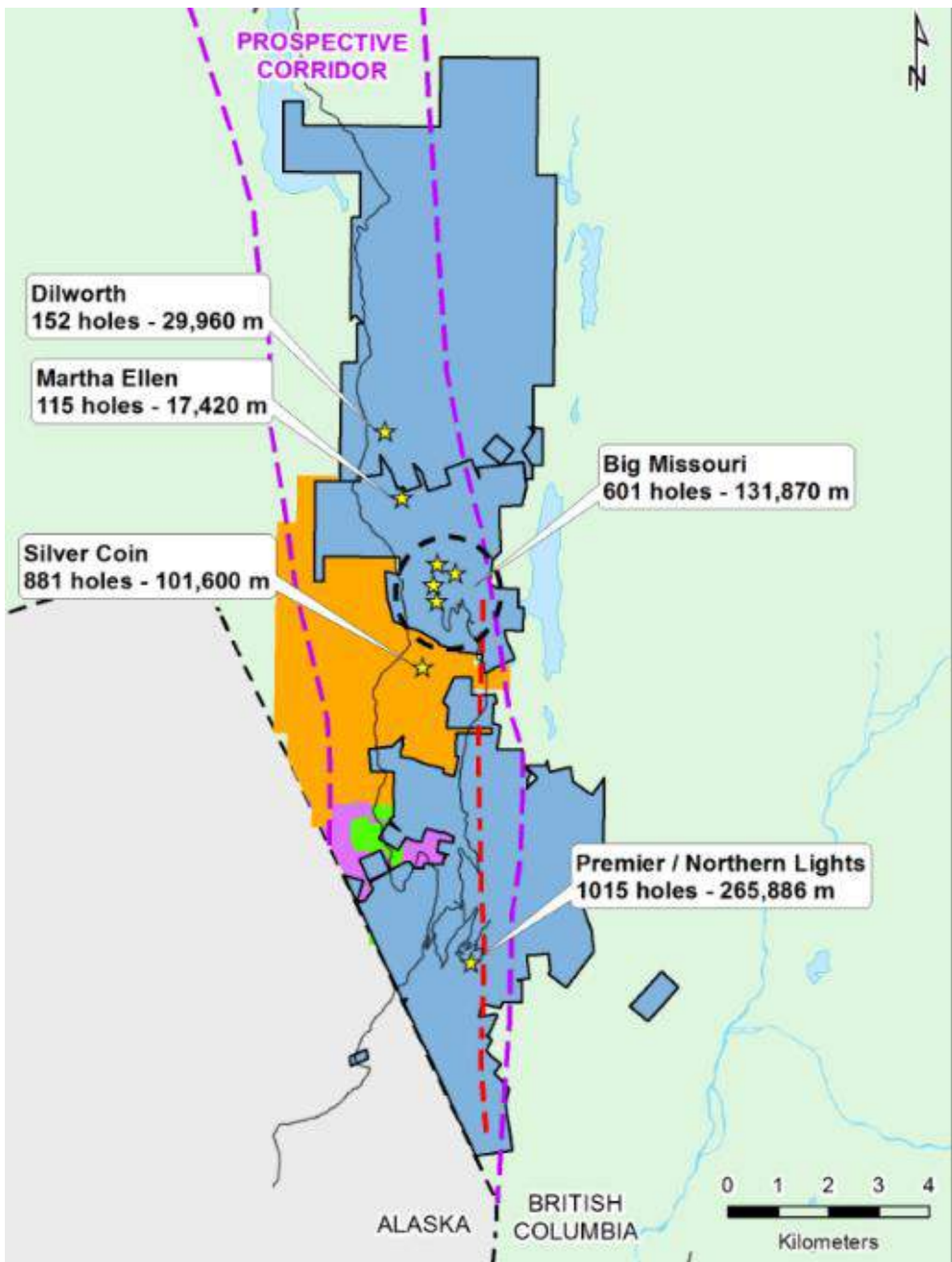
Granduc Road
Granduc公路

PROSPECTIVE CORRIDOR

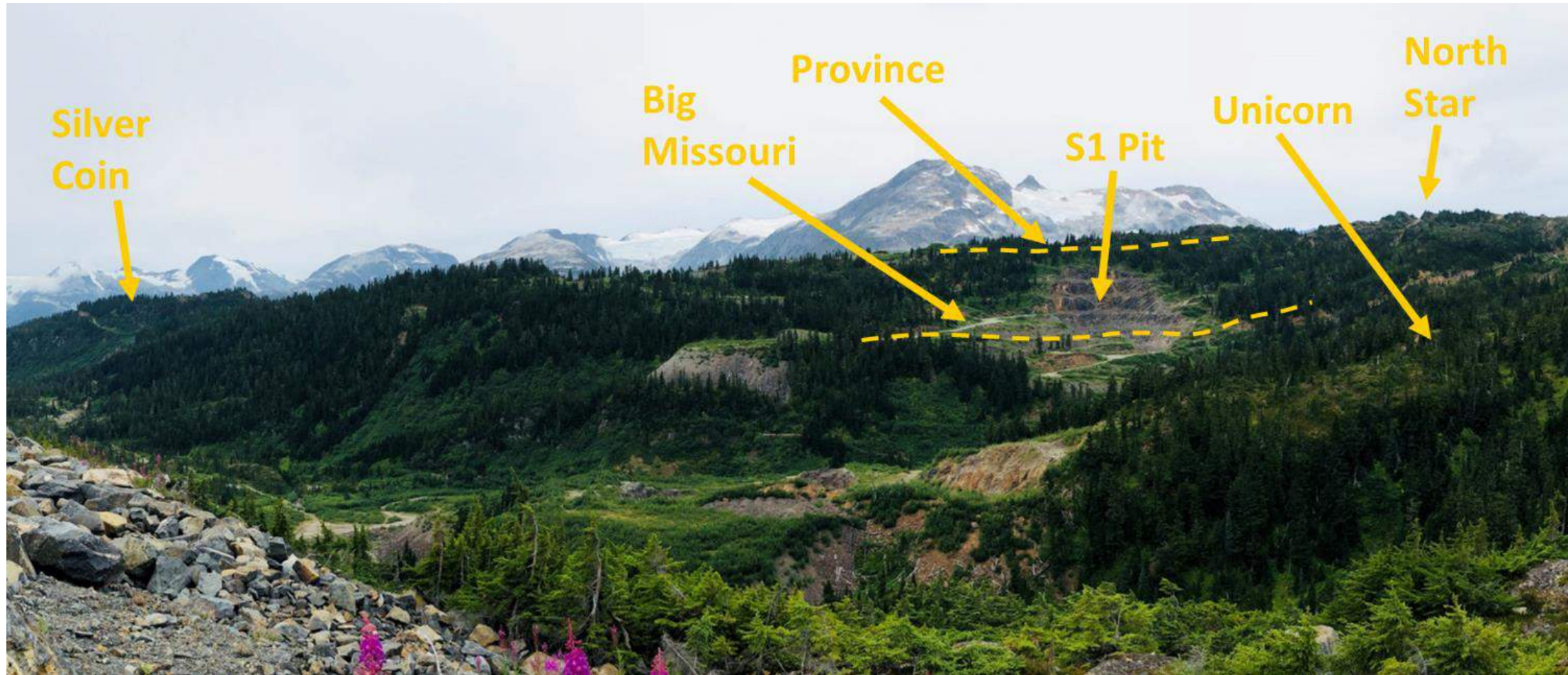
前景广阔的走廊



- Drilling to date ~670 km / 迄今为止钻探总长度约670公里
- 4 mines have produced in the past / 过去有4座矿山进行过生产活动
- Underground mining method will be the most profitable / 地下矿开采方法盈利将最高
- ~ **1 in 10 holes hit 1 oz. gold per tonne** or better grades / 十口钻孔中有一口钻探到黄金品位1盎司/吨或以上的矿段
- One of the most drilled gold projects in Canada / 加拿大钻探最多的黄金项目之一
- Largely continuous blanket of gold & silver mineralization throughout the corridor / 贯穿整个走廊、总体持续的黄金和白银矿化结构层
- Approximately **70% of the property** has not been explored to date / 迄今为止大约**70%**的项目区尚未勘探

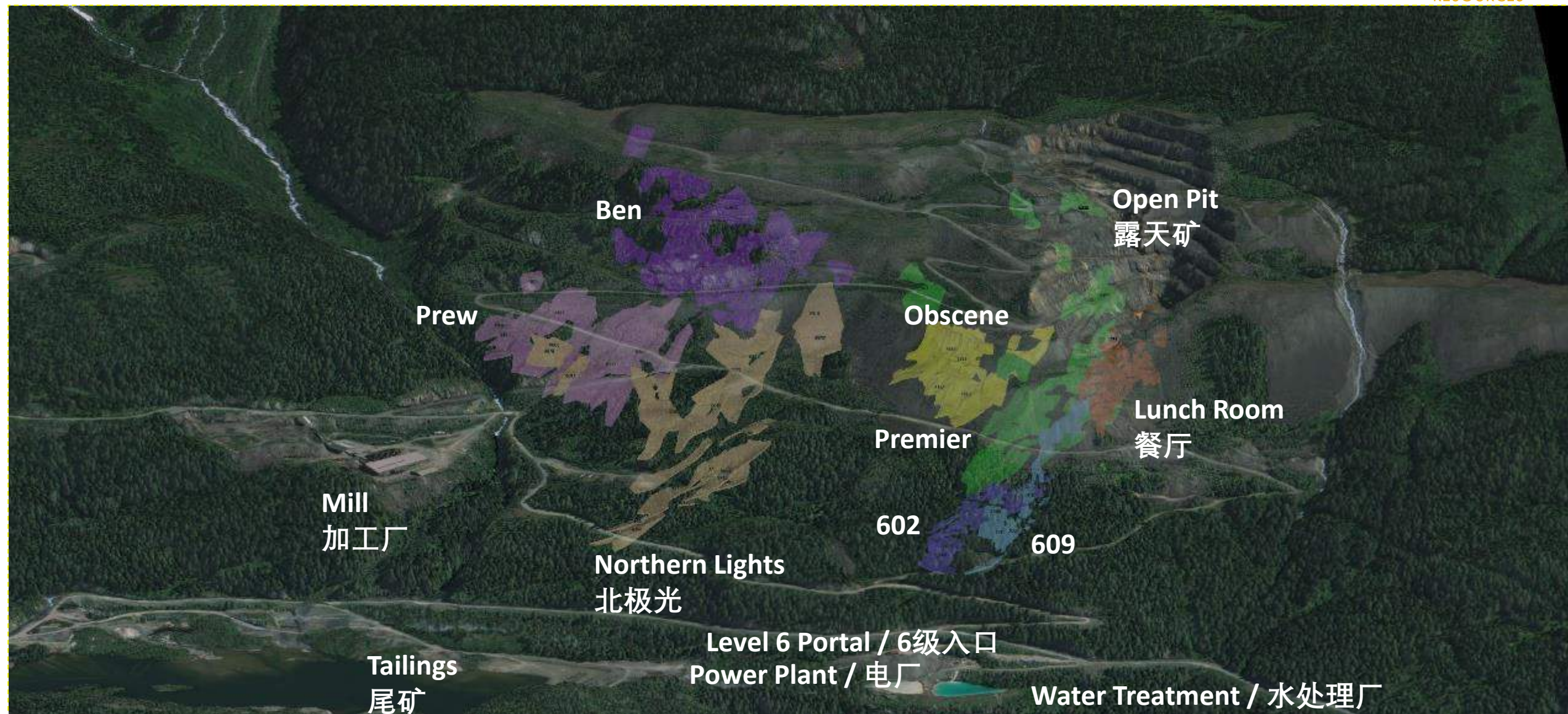


BIG MISSOURI RIDGE / BIG MISSOURI山岭



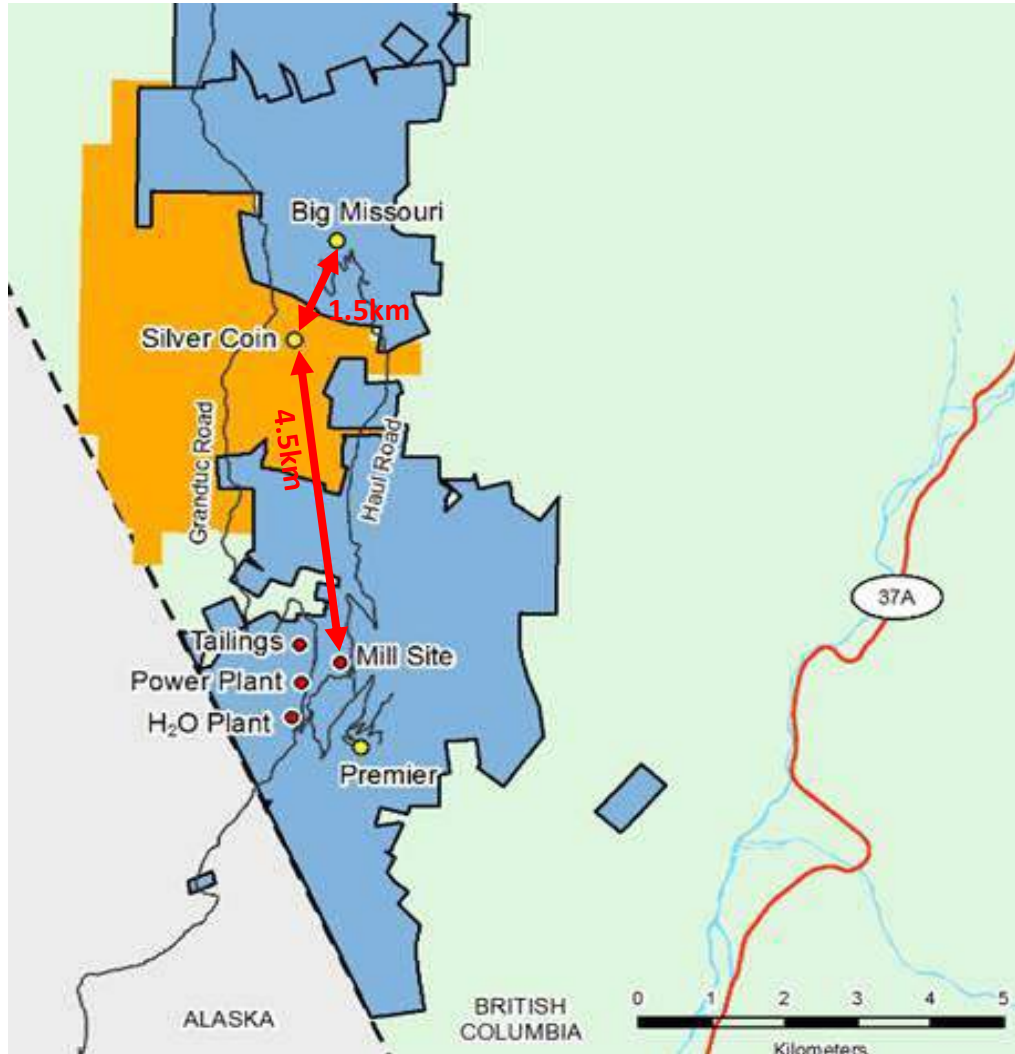
PREMIER-NORTHERN LIGHTS

PREMIER-北极光区



SYNERGISTIC LOCATION OF SILVER COIN & ASCOT

SILVER COIN和ASCOT的协同位置



- Silver Coin is located perfectly between the Premier Mill and the Big Missouri area / Silver Coin完美处在Premier加工厂和Big Missouri地区的中间
- Distance to the Premier Mill is 8km via the Big Missouri Haul Road / 通过Big Missouri运输公路距离Premier加工厂8公里
- The northern edge of mineralization at Silver Coin and the southern edge of the mineralization at Big Missouri are less than 1000m apart. / Silver Coin矿化带的最北边与Big Missouri矿化带的最南边相距不到1千米
- The mineralization at Silver Coin is indistinguishable from Big Missouri and Premier material and can be processed concurrently with identical metallurgical characteristics / Silver Coin矿化带与Big Missouri和Premier的矿物质基本相同，具有相同的冶金特性，可同时进行加工

Interim Before Closing / 关闭前的过渡期

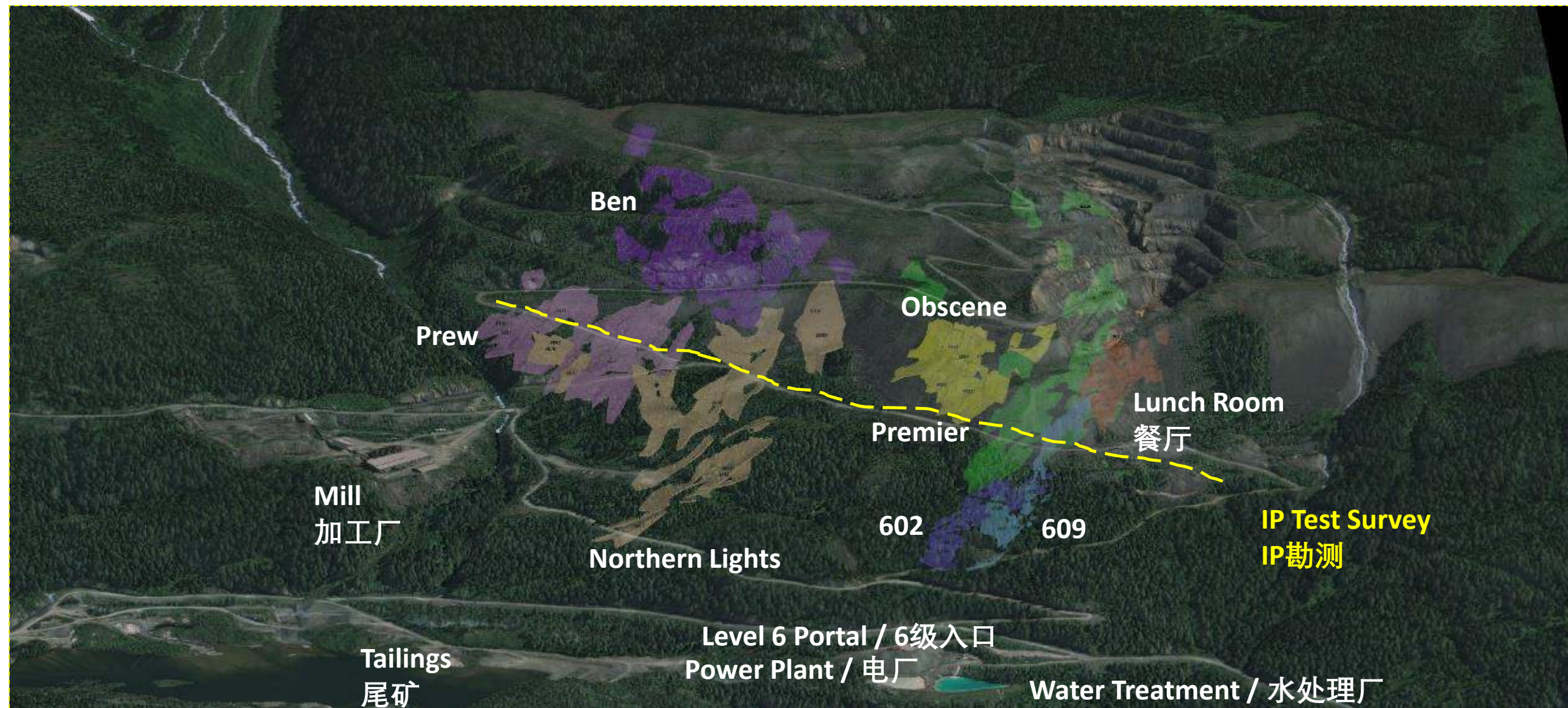
- ~2000m of infill and expansion drilling / 约2000米的加密钻探和扩张钻探
- Resource wireframes / 资源框架

Post Closing / 关闭以后

- Block modeling / 块段建模
- Environmental studies / 环境研究
- Mine planning and engineering studies related to the restart of the Premier mill / 与重启Premier加工厂相关的矿山规划和工程研究

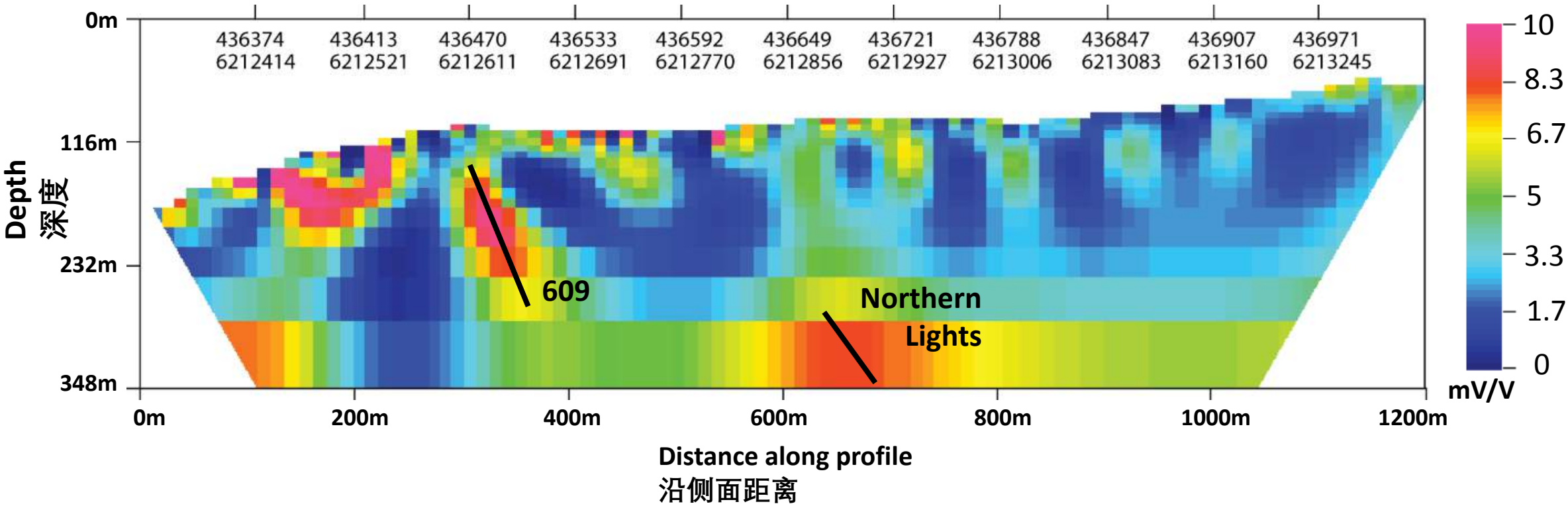
TEST IP SURVEY LINE ON PREMIER-NORTHERN LIGHTS

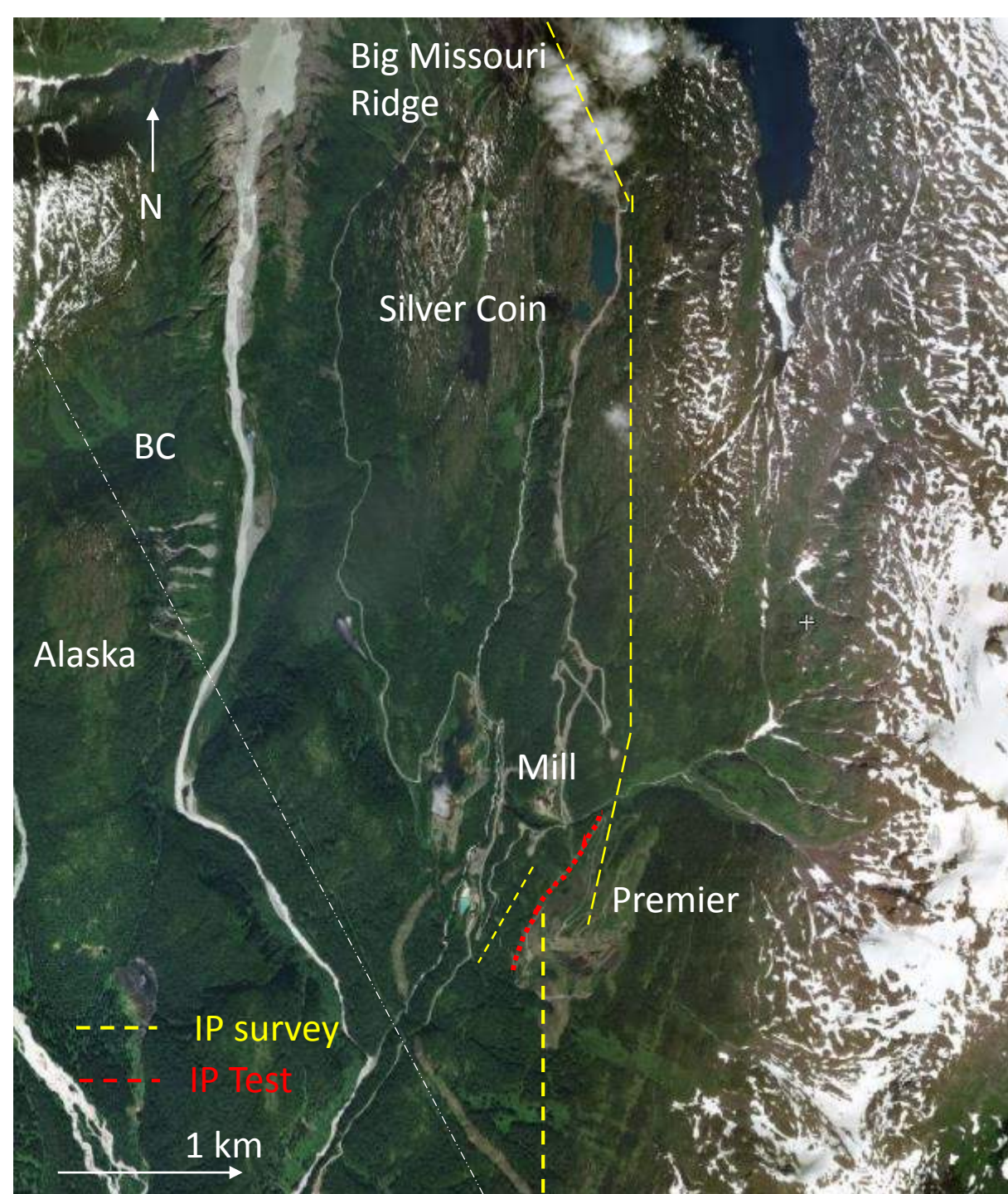
PREMIER-北极光的IP勘测线路



IP TEST LINE RESULTS

IP勘测线路结果





IP SURVEY IN PROGRESS 正在进行IP调查

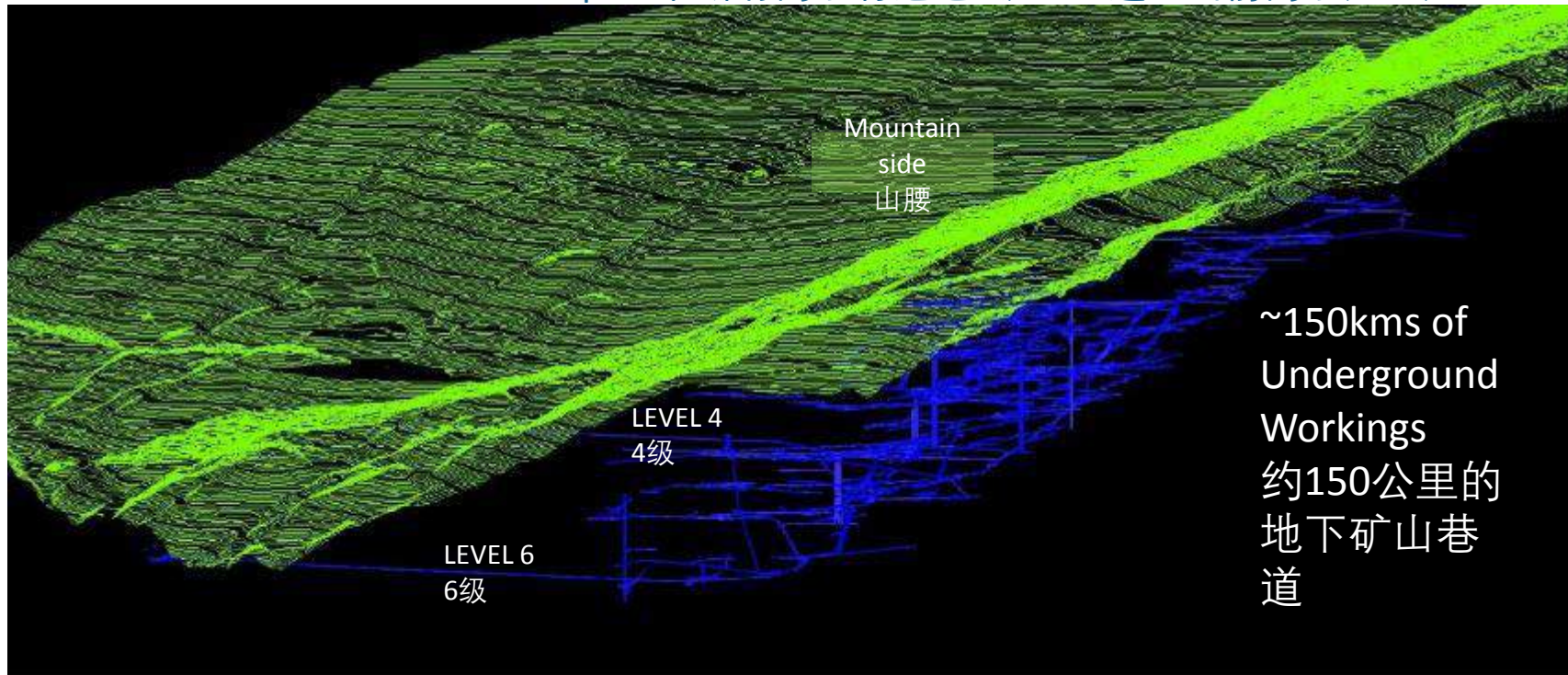


- IP test survey with pole-dipole configuration on 50m centers successfully detected the 609 zone and Northern Lights / 使用单级配置对50米的中心进行IP勘测，成功探测到了609区域和Northern Lights
- 3 additional traverses and data processing are underway / 还有3个导线测量和数据处理正在进行中
- The survey comprises a 4km traverse to the south to the Alaska border and a 6 km traverse to north to the Big Missouri ridge along with a couple of shorter parallel traverses in selected locations / 勘测范围包括阿拉斯加边境以南4公里导线测量和Big Missouri山脉以北6公里导线测量，以及选定区域内的几个较短的平行导线测量
- Line profiles with 50m dipole spacing, probably giving a depth of investigation to about 500m on a 2km line / 调查线路拥有50米的偶极间距，可能对2公里线路上的约500米的深度调查
- We are seeing IP response of 8-10m V/V, which indicates a pyrite content of roughly 8-10%, which is exactly what we are observing in core / 我们看到的IP反应是8-10m V/V，说明黄铁矿的含量约为8-10%，与我们现在岩芯勘测观察到的相同
- A preliminary concern was that small amounts of pyrite in the volcanic hot rock would light up everything but that has not materialized / 一个初步的隐患是火山热岩中少量的黄铁矿会点亮所有的东西，但是现在还未实现
- We are very excited about seeing a number of new targets that have not been explored and hope to drill test some of these before the end of the season / 我们很高兴看到这么多尚未钻探的新靶区，希望在这一季结束前对其中的一些靶区进行钻探测试

PREMIER'S EXISTING UNDERGROUND INFRASTRUCTURE

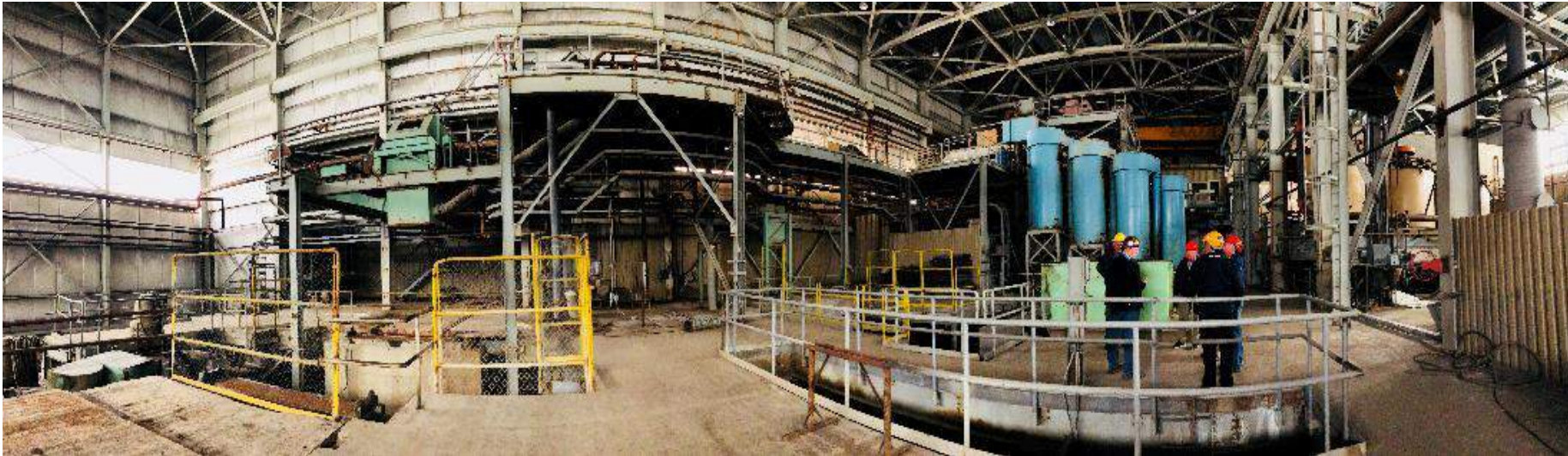
PREMIER现有的地下基础设施

- Current mine planning will utilize a new 5x5 ramp to initially access material below the current level 6 / 当前的矿山规划将采用一个新的5x5的斜坡，初步获得当前6级以下的材料
- Existing development will be used for supply, ventilation and second egress / 现有的开发将用作供应、通风和第二出口
- Ore will pass to new infrastructure below the 6 level and will be trucked from there to the mill / 矿石将经过6级以下的新基础设施，通过卡车运输到加工厂
- Mining will utilize long hole drilling and a modified room and pillar technique / 采矿过程中将使用长孔钻和改良的房柱技术
- All water will exit via 6 level to current water treatment plant / 所有的水将通过6级出口进入当前的水处理厂



MILL STATUS / 加工厂现状

- The existing mill building will be utilized for processing. It previously ran at a capacity up to 2800 tpd, and we will operate somewhere in the range of 1000 to 3000 tpd, depending on quantity of resources supplying ore / 现有的工厂建筑将用于加工。之前产能高达2800吨/天, 我们将运营能力设定在1000到3000吨/天, 根据供应矿石的资源量数量而定
- The most recent test work indicates modern gravity techniques will improve recovery / 最近的测试表明现代重力技术将提高回采率
- The existing building is in excellent shape, however, crushing and grinding circuit, piping and electrical need to be replaced & upgraded / 现有建筑形状完好, 但是粉碎和研磨回路、管道和电气需要替换并升级
- The mill will operate as it had done in the past, using conventional crushing/grinding and Carbon in Leach ("CIL") to produce a doré product, with the addition of a modern gravity circuit/ILR using Knelson concentrators and an Acacia Reactor / 工厂将如从前一样运营, 利用常规粉碎/研磨和炭浸法来生产黄金, 加入现代化的重力回路/ILR使用尼尔森选矿机和Acacia反应器
- No additional surface disturbance will be required / 无需进一步的地面改动工作
- Waste tailings products will be used as backfill in the mine as much as possible with any remainder being discharged into the existing tailings facility / 废料尾矿产品将尽可能多地用作矿山回填料, 剩余部分将放入现有的尾矿设施中



PERMITTING STATUS & WATER TREATMENT

许可证状态和水处理

- Premier- Dilworth operates within the following permits: / Premier- Dilworth 在以下许可证范围内经营:
 - Reclamation and Mines Act Permit issued in 1989 / 1989年颁布的垦荒和采矿法
 - Effluent Permit –PE-8044 1988 / 污水排放许可证–PE-8044 1988
 - Exploration & Drilling Permit MX-1-743 2008/ 2018 / 勘探与钻探许可MX-1-743 2008/ 2018
- Water treatment Plant treats ~ 126 lps and remains compliant / 水处理厂每秒处理污水约126升，符合标准要求



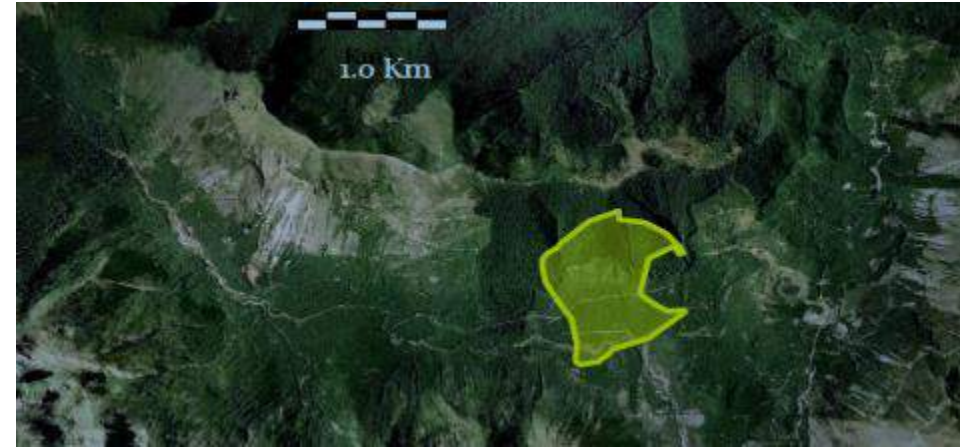
NON GOLD ASSETS / 非黄金资产



Swamp Point Aggregate Project

Swamp Point骨料项目

- Fully permitted mine with deep water port for Panamax vessel / 获得全面许可的矿山，拥有适合巴拿马型船只的深水港
- Currently on care and maintenance / 目前处于维护和维修状态
- Due to transport costs shortage in urban California, peer company Polaris Materials recently sold for ~C\$309M / 由于加州市区运输成本短缺，同行公司Polaris Materials近期以约3.09亿加元的价格卖出
- Opportunity to realize value in a potential sale / 通过潜在出售交易实现价值的机会



Mt. Margaret Copper Project

Mt. Margaret铜矿项目

- Large Copper-Gold porphyry, located in the Gifford Pinot National Forest in Washington State / 大型斑岩型铜-金矿，位于华盛顿州的Gifford Pinot国家森林
- 553Mt of 0.56% CuEq* / 5.53亿吨，铜当量品位0.56%*
- Mineralized to surface, predetermined step outs / 矿化至地表，预先决定的探边钻探
- Potential to increase resources significantly / 显著增加资源量的潜力
- Poised for next phase of drilling / 准备进行下一阶段的钻探

* historic geological resource "non 43-101 compliant" stated by Duval, dated 1980 (Taylor) using a 0.33% CuEq cutoff

* 非43-101历史地质资源量，由Duva报告，1980年(Taylor)，按照0.33%的铜当量边际品位

MANAGEMENT'S 2018 PLAN / 管理层的2018愿景



- Build a new high grade resource estimate / 确定新的高品位资源量评估结果
 - Completed Phase I – Premier/Northern Lights from 8 zones in high grade areas; / 完成一期 – Premier/北极光来自高品位区中的8个区域；
 - Phase II – Infill drill and add high-grade resource of Big Missouri/Unicorn/Silver Coin / 二期 – 加密钻探，增加Big Missouri/Unicorn/Silver Coin的高品位资源量
 - Complete IP survey and follow up on targets / 完成靶区的IP勘测及后续工作
- Concurrently work towards a PEA/mine permit and meet with First Nations / 目前正在推进以初步经济评估/矿山许可证为目标的工作，与原住民会面
- Continue to explore the multiple untested targets to add potential new resources / 继续勘探多个未测试的靶区，以增加潜在的新资源量
- Potential M&A – valorize non core assets / 潜在并购 – 设定非核心资产价格
- Re-start high-grade underground gold mine and validate higher valuation / 重启高品位地下金矿并验证更高的估值

APPENDIX

附录

ASCOT OPEN PIT & UNDERGROUND RESOURCES

ASCOT露天矿和地下矿资源量



Class	Deposit	Tonnes 000's	Average Grades			Contained oz (000's)		
			Au g/t	Ag g/t	<u>AuEq</u>	Au	Ag	<u>AuEq</u>
Indicated	Open-Pit ^{1,2,3}	93,502	0.82	6.9	0.94	2,475	20,783	2,830
	Underground ^{4,5}	1,210	7.02	30.6	7.23	273	1,190	281
Total Indicated	Open-Pit & Underground	94,712	0.90	7.20	1.02	2,748	21,973	3,111

Inferred	Open-Pit ^{1,2,3}	79,278	0.59	7.2	0.71	1,494	18,238	1,804
	Underground ^{4,5}	1,640	6.01	24.9	6.18	317	1,310	326
Total Inferred	Open-Pit & Underground	80,918	0.70	7.56	0.82	1,811	19,548	2,130

Notes:

- 1) Open pit Mineral Resources are reported at a cut-off grade of 0.3 g/t AuEq.
- 2) Source: NI Technical report prepared by Ronald G. Simpson, effective date 31 March, 2014 and Underground Resource updated by Mr. David Rennie, P.Eng. of RPA Inc ("RPA") to prepare an updated NI 43-101 mineral resource estimate focused on eight high-grade zones in the Premier-Northern Lights area (table announced May10, 2018)
- 3) The gold equivalent grade was calculated using metal prices of \$1400/oz for gold and \$24/oz for silver. The gold equivalence formula is as follows: AuEq g/t = Au g/t + (Ag g/t * 0.017)
- 4) Underground Mineral Resources are estimated at a cut-off grade of 3.5 g/t AuEq.
- 5) Gold equivalence was calculated using a ratio of 65:1 Ag:Au and Ag recovery of 45.2%
- 6) The mineral resources presented here were estimated using the Canadian Institute of Mining, Metallurgy and Petroleum (CIM), CIM Standards on Mineral Resources and Reserves, Definitions and Guidelines prepared by the CIM Standing Committee on Reserve Definitions and adopted by CIM Council May 10, 2014.
- 7) Figures are rounded and totals may not add correctly.

SILVER COIN UNDERGROUND RESOURCES

SILVER COIN地下资源量

Table 14.10 Tabulated grade and tonnage of high grade core at Silver Coin for different Au cut offs

Grade tonnage information for Indicated resources of Silver Coin deposit						
Au g/t cut off	Tonnage Kt	Au g/t	Ag g/t	Zn %	Pb %	Cu %
2	702	4.46	17.89	0.88	0.33	0.07
5	210	10.16	16.01	0.81	0.36	0.03
10	54	19.50	18.32	1.01	0.46	0.04
15	14	23.84	19.26	1.13	0.53	0.04
20	4	28.98	22.88	1.19	0.44	0.03
Grade tonnage information for Inferred resources of Silver Coin deposit						
Au g/t cut off	Tonnage Kt	Au g/t	Ag g/t	Zn %	Pb %	Cu %
2	967	4.39	18.98	0.64	0.25	0.4
5	279	9.61	30.85	0.85	0.3	0.07
10	112	13.53	37.87	0.95	0.33	0.08
15	27	18.52	34.82	0.98	0.39	0.07
20	5	24.09	31.19	0.87	0.43	0.05

MANAGEMENT & LEADERSHIP



DEREK WHITE President & CEO

Derek White has over 30 years of experience in the mining and metals industry. He holds an undergraduate degree in Geological Engineering from the University of British Columbia and is also a Chartered Accountant. Prior to joining Ascot Resources Ltd. Mr. White, was the Principal of Traxys Capital Partners LLP, a private equity firm specializing in the mining and minerals sectors. Mr. White was President and CEO of KGHM International Ltd. from 2012 to 2015, and also held the positions of Executive Vice President, Business Development and Chief Financial Officer of Quadra FNX Mining Ltd. from 2004 to 2012. Mr. White has held executive positions with International Vision Direct Ltd., BHP-Billiton Plc, Billiton International Metals BV and Impala Platinum Ltd., in Vancouver, Toronto, London, The Hague, and Johannesburg. Mr. White is also an ICSA Accredited Director.

JOHN KIERNAN COO

John Kiernan is a Mining Engineer with over 30 years of mine operating, engineering, consulting, corporate and financial experience, including a cumulative four years as an underground miner and operating foreman. He was most recently VP Project Development for Magellan Minerals (acquired by Anfield Gold Corp), and is also a director of Kapuskasing Gold Ltd. Previously he was Manager Project Evaluation for Quadra FNX/ KGHM International, Mining Analyst for PI Financial Corp and VP Mining/Mine Manager for Roca Mines Inc. From 1987 to 2006, Mr. Kiernan held various senior engineering positions with Strathcona Mineral Services, Inco Ltd., Wardrop and AMEC. Mr. Kiernan has a B.Sc in Mining Engineering from Queen's University, and an MBA from Laurentian.

CAROL LI CFO

Carol Li is a Canadian Chartered Professional Accountant (CPA) with over 20 years of financial and executive management experience. Prior to joining Ascot Resources Limited in November 2017, Carol spent eight years at Quadra Mining Ltd./Quadra FNX Mining Ltd. as Corporate Controller and then five years at its successor KGHM International Ltd. as Vice President, Finance. She was a key member in the leadership team that transitioned the company from being a one mine junior producer to a multi-national company with six operating mines and three development projects. Before joining Quadra Mining, Carol held various senior financial roles at Cartier Partners Securities and FPC Investment Inc.

LARS BEGGEROW VP Geoscience & Exploration

Lars Beggerow is a geologist with over 20 years experience in minerals exploration and development. Mr. Beggerow started his career in BHP's exploration group working on a large number of base metal and precious metal projects in Europe, North- and South America, Asia and Australia in successively more senior roles. In 2005 Mr. Beggerow was appointed chief geologist by Far West Mining and guided the technical team during the development of the Santo Domingo IOCG deposit in Chile from discovery to pre-feasibility and eventual successful sale of the company to Capstone Mining in 2011. After a short stint with Capstone, Mr. Beggerow provided consulting services to the mining and financial industry until joining Ascot Resources in October 2017. Mr. Beggerow holds a diploma in geology and paleontology from the Freie Universität Berlin in Germany.

管理层和领导团队



DEREK WHITE 总裁兼首席执行官

Derek White拥有矿业和金属行业30多年工作经验，获得卑诗大学地质工程学士学位，还是一位注册会计师，加入Ascot Resources Ltd.之前，曾是专注于矿业和矿产领域的私募股权公司Traxys Capital Partners LLP的负责人，2012-2015年在KGHM International Ltd.担任总裁兼首席执行官，2004-2012年在Quadra FNX Mining Ltd.担任业务发展执行副总裁兼首席财务官。White还在温哥华、多伦多、伦敦、海牙和约翰内斯堡的International Vision Direct Ltd.、必和必拓、Billiton International Metals BV和Impala Platinum Ltd.担任各类管理职务，获得了特许秘书和行政管理学会的注册董事资格。

JOHN KIERNAN 首席运营官

John Kiernan是一位拥有超过30年矿山运营、工程、咨询、企业和财务经验的采矿工程师，包括从事了4年的地下矿工和营运领班工作，上一个职务是Magellan Minerals (被Anfield Gold Corp收购)的项目开发副总裁，目前还在Kapuskasing Gold Ltd.担任董事，此前曾在Quadra FNX/ KGHM International任职项目评估经理、在PI Financial Corp担任矿业分析师以及在担任Roca Mines Inc.采矿副总裁/采矿经理，1987年至2006年间曾在Strathcona Mineral Services, Inco Ltd.、Wardrop和AMEC担任多个高级工程职务。Kiernan先生获得了皇后大学采矿工程理学学士学位和劳伦森大学工商管理硕士学位。

CAROL LI 首席财务官

Carol Li是一位拥有超过20年财务和高级管理经验的加拿大注册会计师，在2017年11月加入Ascot Resources Limited之前在 Quadra Mining Ltd./Quadra FNX Mining Ltd.担任了八年的企业内控官，之后在继任公司KGHM International Ltd.担任了五年的财务副总裁，是引领公司从一家矿山初级生产商向拥有6座生产矿和3个开发项目的跨国公司转变的领导团队中的核心成员，在加入Quadra Mining之前曾在Cartier Partners Securities和FPC Investment Inc.担任多个高级财务职务。

LARS BEGGEROW 地球科学与勘探副总裁

Lars Beggerow是一名拥有20多年矿产勘探和开发经验的地质师，职业生涯始自必和必拓，参与过欧洲、北美、南美、亚洲和澳大利亚的多个基本金属和贵金属项目，先后担任高级职务，2005年被任命为Far West Mining首席地质师，在开发智利圣多明各的IOCG矿床技术团队担任顾问，一路指导该矿从开发到预可行性报告直至2011年被Capstone Mining成功收购。在Capstone短暂停留后，他曾为矿业和金融行业提供咨询服务，直到2017年10月加入Ascot Resources。Beggerow先生拥有德国柏林自由大学的地质和古生物学学位。

BOARD OF DIRECTORS 董事会



RICK ZIMMER Chairman 董事会主席

Mr. Zimmer is Chairman of Ascot and a corporate director and is the former President and Chief Executive Officer of Far West Mining Ltd., which was acquired by Capstone in 2011. Prior to Far West, Mr. Zimmer worked for Teck Corporation, Teck-Cominco and Teck-Pogo Inc. from 1992 to 2007. He served in various engineering and operating roles, including from 1998 to 2007, as Vice President and Project Manager for Teck-Pogo on the design and construction of the Pogo Mine near Fairbanks, Alaska. Before joining Teck, Mr. Zimmer was employed with Bow Valley Industries as Senior Staff Engineer responsible for evaluation of new mining ventures and the operation of its coal mining division. Mr. Zimmer has over 40 years of experience in the mining industry and has a B.Sc. degree, B.Eng., MBA and is a P.Eng. in the Province of British Columbia. Mr. Zimmer is also a director of Capstone Mining Corp. and Alexco Resources Corp.

Zimmer先生是Ascot董事会主席和公司董事，曾在2011年被Capstone收购的Far West Mining Ltd.担任总裁兼首席执行官，在加入Far West之前的1992-2007年，先后在泰克公司、泰克明科和Teck-Pogo Inc.任职。Zimmer曾担任各种工程和运营职务，包括1998-2007年期间在Teck-Pogo任职副总裁兼项目经理，负责阿拉斯加州费尔班克斯附近Pogo矿山的设计和施工；加入Teck之前曾在Bow Valley Industries担任高级主管工程师，负责评估新矿和运营煤矿开采部门。Zimmer先生在采矿行业拥有超过40年经验，获得了理学学士学位、工程学士学位和工商管理硕士学位，是卑诗省专业工程师，还在Capstone Mining Corp.和Alexco Resources Corp.担任董事。

BILL BENNETT Director 董事

Mr. Bennett has a BA from the University of Guelph and a law degree from Queen's University. He was elected for the first time in 2001. Mr. Bennett is known across Canada for his knowledge of the mining industry in BC. He led the BC government's efforts over many years to restore BC's competitiveness for exploration investment, including having improved the BC Ministry of Energy & Mines permitting process and helping to launch BC's First Nations mine revenue sharing program. There are few people in Canada who have such a strong combined knowledge of government processes, of the mining industry and of First Nations. Mr. Bennett also sits on the Board of Directors of Kutcho Copper Corp. and Eagle Plains Resources Ltd.

Bennett先生拥有圭尔夫大学文学学士学位和皇后大学法学学位，于2001年初次获选。他对卑诗省采矿行业的认知在加拿大大众所周知，多年来领导卑诗省政府恢复该省的勘探投资竞争力，包括改进卑诗省能源矿产部的审批流程，帮助推出卑诗省首个原住民矿山收入共享计划，是加拿大鲜有的对政府流程、采矿行业和原住民充分了解的人士之一。Bennett先生还是Kutcho Copper Corp.和Eagle Plains Resources Ltd.的董事会成员。

KEN CARTER Director 董事

Ken graduated from UBC (1970) BSc Geology. From 1970 to 1988 he worked for Cominco Ltd in North America, Europe and the Middle East. From 1988 to 1991 he was director of Canadian Exploration for Echo Bay Mines Ltd. Since 1991 he has been involved with a number of junior mining companies in a management / director capacity. He retired in 2009 and now serves Ascot as an independent director.

Ken于1970年毕业于卑诗大学，1970-1988年任职于泰克明科北美、欧洲和中东分部，1988-1991年在Echo Bay Mines Ltd.担任加拿大勘探总监，自1991年起一直在多家初级矿业公司担任管理/董事职务，于2009年退休，目前是Ascot的独立董事。

ROBERT EVANS Director 董事

Bob obtained his Chartered Accountant designation in 1974. From 1979 to 1986 he worked in the junior exploration business in Calgary in both oil and gas and mining. Since 1986 he has been in Vancouver, in the junior mining exploration sector. He has been a director / CFO of a number of junior companies, including Stikine Resources Ltd, but now works exclusively with Ascot.

Bob于1974年获得了注册会计师资格，1979-1986年受雇于卡尔加里油气和采矿行业初级勘探公司，自1986年起一直在温哥华的初级矿产勘探领域任职，一直在Stikine Resources Ltd等多家初级公司担任董事/首席财务官，但现在仅供职于Ascot。

GREG GIBSON Director 董事

Greg is President and CEO of Sprott Mining and Jerritt Canyon Gold LLC. He has more than 30 years' experience in the mining industry as a miner, mine manager, director, CEO and President. Greg's experience has focused on gold and copper mines primarily in Canada, US, and Australia. He successfully led Trelawney Mining and Exploration as President, CEO and director from an early explorer to the \$608 million sale to IAMGOLD in 2012. Greg is a director of Latin American Minerals, Barkerville Gold Mines, Kerr Mines, Inventus Mining Corp, Sprott Mining Inc., Jerritt Canyon Canada, Mag Copper Ltd. and Rae Wallace Mining.

Greg是Sprott Mining和Jerritt Canyon Gold LLC总裁兼首席执行官，在采矿行业拥有30多年经验，先后任职矿工、采矿经理、董事、首席执行官和总裁，主要致力于加拿大、美国和澳大利亚的金矿和铜矿。身为Trelawney Mining and Exploration总裁、首席执行官兼董事，他成功领导公司从一家早期勘探商发展至2012年以\$6.08亿出售给IAMGOLD。Greg目前在Latin American Minerals、Barkerville Gold Mines、Kerr Mines、Inventus Mining Corp、Sprott Mining Inc.、Jerritt Canyon Canada、Mag Copper Ltd.和Rae Wallace Mining担任董事。

BOARD OF DIRECTORS Continued

董事会（续）



DON NJEGOVAN

Director / 董事

Mr. Njegovan has been the Vice President, New Business Development at Osisko Mining Inc. since February 2016. He was a director of St. Andrew Goldfields until it was acquired by Kirkland Lake Gold in 2016 and is currently on the Board of Directors of Sable Resources. He was formerly Managing Director of Global Mining at Scotiabank from August 2010 to June 2014. Prior to that, he was an investment banker at Toll Cross Securities Inc. from June 2005 to July 2010. Mr. Njegovan, has over 20 years of experience in the Mining Industry starting work underground in 1989 for Hudson Bay Mining & Smelting Co., Ltd. Mr. Njegovan holds a Bachelor of Science Mining Engineering from Michigan Technological University and a Bachelor of Arts from the University of Manitoba.

Njegovan先生自2016年2月以来一直在Osisko Mining Inc.担任新业务开发副总裁，曾在Andrew Goldfields任职董事，直到2016年Andrew Goldfields被Kirkland Lake Gold收购，目前是Sable Resources董事会成员，2010年8月-2014年6月曾在Scotiabank担任全球矿业总经理，2005年6月至2010年7月在Toll Cross Securities Inc.担任投资银行家。自1989年在Hudson Bay Mining & Smelting Co., Ltd.从事矿工以来，Njegovan在采矿行业积累了20多年工作经验，获得了密歇根理工大学采矿工程理学学士学位和马尼托巴大学文学学士学位。

JAMES STYPULA

Director / 董事

James Stypula is a businessman with over 30 years' experience and a former investment advisor and financier of mineral exploration and development companies in North and South America. Jim was the former Chairman of the Board of Directors of Magellan Minerals Ltd after its merger with Chapleau Resources where he served as CEO and Director. He was also one of the founding directors of Far West Mining Ltd. Jim has acted on numerous board committees and has a wealth of business experience related to the mining industry, especially with respect to the small cap gold sector.

James Stypula是一位拥有30多年经验的商人，曾在北美和南美的矿产勘探和开发公司担任投资顾问和金融家。Jim曾在Magellan Minerals Ltd担任董事会主席，此前在与之合并的公司Chapleau Resources任职首席执行官兼董事，还是Far West Mining Ltd.的创始董事之一。他曾在众多董事委员会任职，在采矿行业尤其是小型金矿领域拥有丰富的商业经验。

PROFORMA STOCK INFORMATION / 股票信息



Stock Ticker / 股票交易代码	TSX.V: AOT
Common shares outstanding ¹ / 已发行普通股 ¹	179,161,120
Stock options and warrants / 股票期权和认股权证	14,880,125
Fully diluted common shares / 完全摊薄后普通股	194,041,245
Market Cap ^{2,4} / 市值 ^{2,4}	155,870,174加元

1. Includes 20,878,976 shares expected to be issued for the Silver Coin property acquisition / 包括因收购Silver Coin项目预计将发行的20,878,976股

2. As at September 24, 2018 / 截止2018年9月24日

3. Subject to close of the Jayden using current share prices and non brokered private financing / 受制于利用当前股价和非经纪人私募融资完成Jayden

4. Actual market cap as at September 24, 2018 is CAD\$135,095,465 / 截止2018年9月24日真实的市值为135,095,465加元

Investor Relations / 投资者关系

Kristina Howe, VP IR / 投资者关系副总裁

E: khowe@ascotgold.com

T: 778-725-1060

www.ascotgold.com